



PRODUCTS CATALOGUE
2017



Orchestral perfection
A full line of Audiology Equipment

NEWS FOR 2017

Drum - Hearing Instrument Test box
See page 11



DESIGNED, ENGINEERED AND
MANUFACTURED IN ITALY

Audiometers Hybrid



Bell
Diagnostic audiometer



HYTECH

Bell is a basic diagnostic audiometer, capable of performing fast and accurate air and bone conduction threshold examinations. Simple operation, a fast and reliable automatic examination mode, a user-friendly interface and easy portability make Bell the ideal instrument for private clinics, multi-specialist clinics and occupational medicine applications.

- Pure tone audiometry in AC and BC (only Plus model)
- Hughson-Westlake auto threshold test
- Color graphical display
- Internal memory for 100 patients
- Cost effective solution
- Hybrid technology: can be operated through the PC



Harp
Diagnostic audiometer



HYTECH

Harp is an advanced diagnostic audiometer, capable of performing fast and accurate air, bone and speech audiometric exams, as well as several additional tests including QuickSIN™ and a two-channel master hearing aid. Top-level features combined with ease of use and portability make Harp the ideal choice for a wide range of users, from audiologists to clinics and hospitals.

- Pure tone and speech audiometry in AC, BC and FF
- Internal flash memory for the speech material (only Plus model)
- Additional tests: HW auto threshold, ABLB; (only Plus model) SISI, DLI, Tone decay, Stenger, Master Hearing Aid, TEN test (optional), QuickSIN™ (optional)
- Built-in thermal printer (optional)
- Hybrid technology: can be operated through the PC

Check the video on [YouTube](#)

Audiometers Hybrid



Piano
Clinical audiometer



HYTECH

Piano is an advanced clinical audiometer with two separate and independent channels. Piano features a complete battery of tests, all easily managed via a wide touch screen colour display. Advanced features, supreme flexibility and extreme simplicity of use make Piano the ideal choice for clinics and hospitals, as well as for professional practitioners who demand the very best from their instruments.

- Wide color graphical display with touch screen
- Complete test battery: PTA, Speech, HW auto threshold, ABLB
- Tone Decay, SISI, DLI, MLB, Stenger, Master Hearing Aid, TEN test, QuickSIN™ (optional); (only Plus model) Multi Frequency, High Frequency, Bekesy, MLD
- Internal flash memory for the speech material
- Built-in thermal printer (optional)
- Hybrid technology: can be operated through the PC



Piano Plus VRA
Video VRA audiometry

The "Plus VRA" version of the Piano audiometer forms the heart of a professional VRA system and can use as reinforces either traditional cabinet toys or videos and images on one or more displays.

- Fully featured clinical audiometer
- Visual Reinforcement Audiometry (VRA) and Conditioned Play Audiometry (CPA) additional tests available
- Reinforces activation directly controlled through the audiometer
- Up to three animated toys connected to the audiometer
- Up to three LCD displays showing animations and images for video-based visual reinforcement (requires a PC with the software Daisy and the VRA license)
- Complete sets of animations and pictures pre-installed, easily upgradable by the user

Audiometers

PC-iPad controlled



Piccolo
Portable audiometer



Piccolo is a basic diagnostic audiometer offering air, bone and speech audiometry functions. Piccolo can be controlled either from a computer running Windows or, for the first time ever, from an iPad®. A lightweight, compact design, powerful, user-friendly software, and Noah connectivity combine to make Piccolo the ideal choice for professionals on the move.



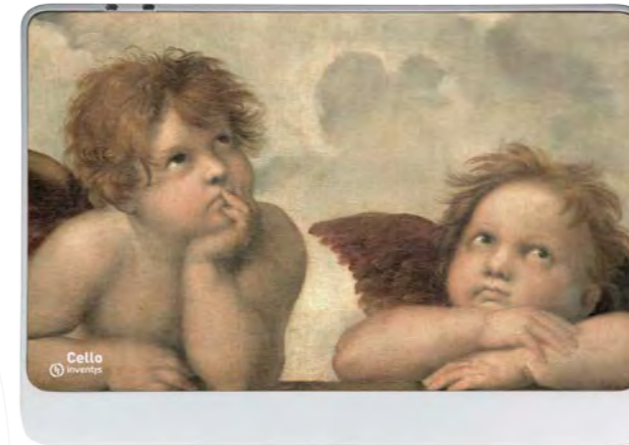
Try the Maestro app! It is available for free download on the App Store. You can use it even without a Piccolo.



- Three different models available: Basic (AC only), Plus (AC/BC) and Speech (AC/BC/Speech)
- iPad® control (requires Aero option) through the Maestro App. Wireless Bluetooth connection
- Computer control through the dedicated Noah or Daisy module. USB connection.
- Very small and light
- Power supply through the USB connection, when controlled with the computer
- Cost effective

Audiometers

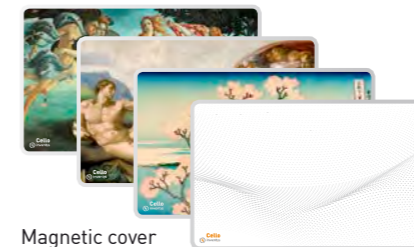
PC-iPad controlled



Cello
Diagnostic audiometer



Cello is a PC- or iPad® controlled diagnostic audiometer, capable of performing fast and accurate air, bone and speech audiometry exams, as well as several additional tests including QuickSIN™, HF audiometry, and video-VRA. With its revolutionary design, complete feature set and top reliability, Cello is a little masterpiece, ideal for anyone unwilling to compromise on appearance and user experience.



Magnetic cover

- Pure tone and speech audiometry in AC, BC and FF
- Additional tests: HW auto threshold, SISI, Master Hearing Aid, High-frequency audiometry (optional), TEN test (optional), QuickSIN™ (optional)
- Video Visual Reinforcement Audiometry (VRA) option available
- iPad® control (requires Aero option) through the Maestro App. Wireless Bluetooth connection
- Computer control via USB through the dedicated Noah or Daisy module
- Wall-mounting option (VESA standard) and dedicated transducers support available
- Changeable magnetic cover

Check the video on [YouTube](#)

Impedance



Flute
Diagnostic Middle Ear Analyzer



Flute is a diagnostic middle ear analyzer, capable of performing incredibly fast and reliable automatic sequences of tympanometry and reflex threshold tests, as well as manual reflex and reflex decay tests, ETF for intact and perforated eardrums, high frequency tympanometry. Great versatility, a user-friendly interface, advanced features and small size make Flute the ideal choice for a wide range of users, from audiologists to clinics and hospitals.

- Three versions available: Basic, HF, and Plus
- Automatic and manual tympanometry
- Manual and automatic Ipsi/Contra reflex test
- Reflex decay
- Eustachian Tube Function (intact / perforated eardrum)
- Tympanometry with 1,000 Hz probe tone
- Two user programmable auto test sequences
- Color graphical display
- Built-in thermal printer (optional)



Viola
Middle Ear Analyzer / Audiometer



Viola is a combo unit that integrates a diagnostic middle ear analyzer offering ultrafast and reliable tympanometry and reflex tests with a diagnostic audiometer capable of performing threshold and speech examinations in AC and BC. Small footprint, complete features set, great reliability and ease of use make Viola the perfect choice for professionals on the move and for installations where space is at a premium.

- Two versions available: Basic and Plus
- Pure tone audiometry in AC and BC
- Speech audiometry and QuickSIN™ (Plus version)
- Automatic tympanometry
- Ipsi/Contra acoustic reflex test
- Acoustic reflex decay (Plus version)
- Built-in thermal printer (optional)

Impedance



Clarinet
Clinical Middle Ear Analyzer



Clarinet is a clinical middle ear analyzer, featured with all the tests needed for a deep and accurate investigation of middle ear disorders. Automatic and manual tympanometry, acoustic reflex threshold, decay and latency examinations, ETF for intact and perforated eardrums, high frequency and multi-component tympanometry are all available and full results can be observed on a wide color touch screen display.

- Manual and automatic tympanometry
- Multi-frequency probe tones (Plus only)
- Multi-component measurements (Plus only)
- Manual and automatic acoustic reflex test
- Acoustic reflex decay
- Acoustic reflex latency
- Eustachian Tube Function test for intact and perforated eardrums
- Two user programmable auto test sequences
- High resolution color display with touch screen
- Built-in thermal printer (optional)

Fitting



Delfino
Wireless Video Otoscope



Delfino is our award winning wireless video otoscope. Its small and ergonomic handpiece allows the operator to see, capture and store top quality images of the ear canal on a traditional display or on the computer screen. Maximum patient and operator comfort are guaranteed by wireless functionality.

Crisp and clear images, ease of use, a small footprint, ergonomic design and Noah connectivity combine to make Delfino the perfect choice for hearing aid dispensing centres, ENT specialists and audiologists.

- Digital (USB) and analog video outputs
- Embedded tip heater to prevent the fogging
- Compatible with standard Heine speculum
- Rechargeable Li-Ion battery

Fitting



Trumpet
REM system and PC controlled audiometer

Trumpet is an advanced and easy-to-use Real Ear Measurement system, capable of performing quick and accurate in-situ measures thanks to its small and lightweight probes and its built-in amplified speaker. Not only, Trumpet combines also a diagnostic audiometer for carrying out air, bone and speech audiometric exams. Controlled directly from your computer, Trumpet offers a complete but simple and intuitive software interface, which makes it a compact and portable system with no compromises.

- Standard measures (REUG/R; REAG/R; REIG; REOG/R)
- LTA or snapshot acquisition mode
- Open fit feature
- NAL, DSL v 5 fitting target protocols
- Graphical assisted fitting
- "Advanced" mode for deeper investigations
- Counseling tools
- Live mode for speech mapping
- Optional RECD kit for measurements in coupler
- Pure-tone and speech audiometry in AC, BC and FF (optional)



Drum
Hearing Instrument Test Box (HIT)

Drum is a hearing instrument test box (HIT) capable of an impressive ambient sounds attenuation, and featured with all the standard tests for evaluating performances of air conduction hearing aids. Directly controllable from the Maestro software, Noah compatible and equipped with all couplers and adapters for any type of hearing aids, Drum is the perfect solution for those most demanding users who are not willing to compromise on user friendliness of their instrument.

- High attenuation of ambient sounds
- Standard tests according to EN-60118, ANSI S3.22
- Battery adapters
- Built-in telecoil
- Fully computer controlled through Maestro
- Noah compatible

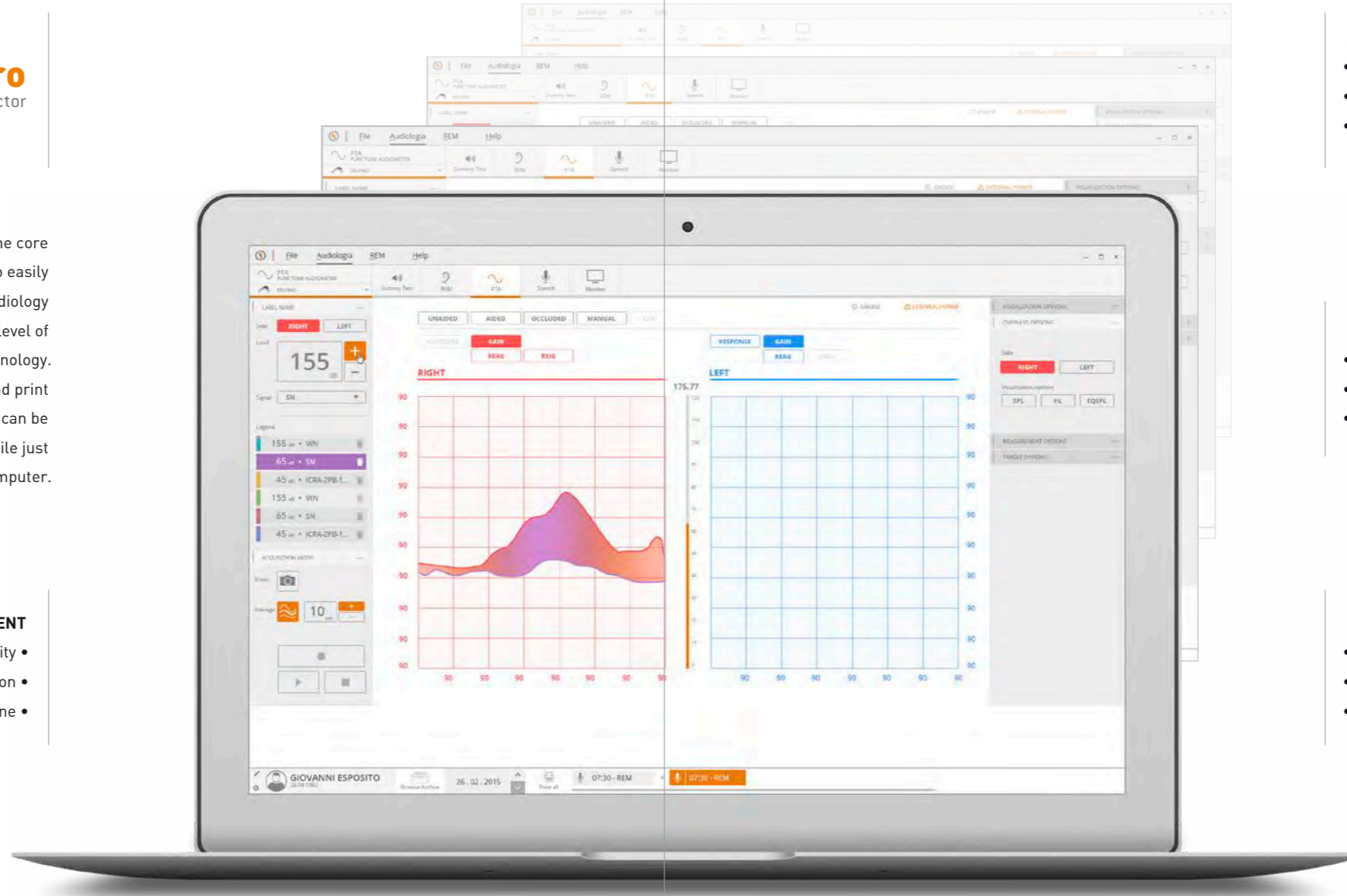
Software Suite

Maestro The Orchestra Director

As an orchestra has its conductor, so Maestro is the core of your Inventis instruments set-up, allowing you to easily manage the patient data and fully interact with your audiology equipment, bringing your daily practice to a new level of technology. Run, review and combine exams. Create, check and print reports. These are just few of the operations that can be straightforwardly administered through Maestro, while just interacting with your computer.

PATIENT DATA MANAGEMENT

- Archiving functions and Noah compatibility
- Exam comparison
- Fully customizable report engine



AUDIOMETRY & IMPEDANCE

- Hybrid control of stand-alone audiometers
- Complete management of PC-based devices
- Live view mode on bigger screen

FITTING

- Easy and customizable workflow
- Intuitive interface
- Graphical assisted fitting

VIDEO-OTOSCOPY

- Image grabbing and video recording
- Zooming function
- Side-by-side view

**Bell Basic****Bell Plus****Harp Basic****Harp Plus****Piano Basic****Piano Plus****Piano Plus VRA**

Type of device	Hybrid audiometer	Hybrid audiometer	Hybrid audiometer			Hybrid audiometer	Hybrid audiometer	Hybrid audiometer	Hybrid audiometer
Class (EN 60645, ANSI S3.6)	4	3	2 (A or AE)			2 (A or AE)	1 (A or AE)	1 (A or AE)	1 (A or AE)
Output	AC	AC, BC	AC, BC, Speech			AC, BC, Speech	AC, BC, Speech	AC, BC, Speech, HF	AC, BC, Speech, HF
Masking	NBN	NBN, WN	NBN, WN, SN			NBN, WN, SN	NBN, WN, SN	NBN, WN, SN	NBN, WN, SN
Insert masking earphone	No	Optional	Optional			Optional	Optional	Optional	Optional
Warble tone	Yes	Yes	Yes			Yes	Yes	Yes	Yes
Pulsed tone	0.5Hz, 1Hz, 2 Hz	0.5Hz, 1Hz, 2 Hz	0.5Hz, 1Hz, 2 Hz			0.5Hz, 1Hz, 2 Hz	0.5Hz, 1Hz, 2 Hz, selectable interval	0.5Hz, 1Hz, 2 Hz, selectable interval	0.5Hz, 1Hz, 2 Hz, selectable interval
Frequency range	125 - 8,000 Hz	125 - 8,000 Hz	125 - 8,000 Hz			125 - 8,000 Hz	125 - 8,000 Hz	125 - 20,000 Hz	125 - 20,000 Hz
Maximum output intensities									
AC	-10 to 120 dB HL	-10 to 120 dB HL	-10 to 120 dB HL			-10 to 120 dB HL	-10 to 120 dB HL	-10 to 120 dB HL	-10 to 120 dB HL
BC	-	-10 to 80 dB HL	-10 to 80 dB HL			-10 to 80 dB HL	-10 to 80 dB HL	-10 to 80 dB HL	-10 to 80 dB HL
AC HF	-	-	-			-	-	-20 to 90 dB HL	-20 to 90 dB HL
Attenuator step	5 dB	5 dB	1 - 5 dB			1 - 5 dB	1 - 5 dB	1 - 5 dB	1 - 5 dB
FF output (external amp. required)	No	No	Yes			Yes	Yes	Yes	Yes
Support of insert earphones (ER-3 and ER-5)	Separated calib. table	Separated calib. table	Separated calib. table			Separated calib. table	Dedicated output / separated calib. table	Dedicated output / separated calib. table	Dedicated output / separated calib. table
Speech audiometry	No	No	Yes			Yes	Yes	Yes	Yes
Speech material on the internal flash memory	-	-	No			Yes	Yes	Yes	Yes
Speech inputs	-	-	EXT1, EXT2, Mic			EXT1, EXT2, Mic, Internal flash memory	EXT1, EXT2, Mic, Internal flash memory	EXT1, EXT2, Mic, Internal flash memory	EXT1, EXT2, Mic, Internal flash memory
Automatic audiometry	HW auto threshold	HW auto threshold	HW auto threshold			HW auto threshold	HW auto threshold	HW auto threshold, Bekésy	HW auto threshold, Bekésy
Special tests	-	-	ABLB			ABLB, Tone Decay, SISI, DLI, Stenger, Master Hearing Aid, TEN test (opt.), QuickSIN™ (opt.)	ABLB, Tone Decay, SISI, DLI, MLB, Stenger, Master Hearing Aid, TEN test, QuickSIN™ (opt.)	ABLB, Tone Decay, SISI, DLI, MLB, Stenger, Master Hearing Aid, Multi frequency, MLD, TEN test, QuickSIN™ (opt.)	ABLB, Tone Decay, SISI, DLI, MLB, Stenger, Master Hearing Aid, Multi frequency, MLD, TEN test, QuickSIN™ (opt.)
Pediatric tests	No	No	No			No	No	No	VRA, CPA
Control of reinforcers	No	No	No			No	No	No	Up to three reinforcers
Talk over	Internal or external microphone	Internal or external microphone	Internal or external microphone			Internal or external microphone	Internal or external microphone	Internal or external microphone	Internal or external microphone
Talk back	No	No	Yes			Yes	Yes	Yes	Yes
Monitor	No	No	Internal speaker or headphone			Internal speaker or headphone	Internal speaker or headphone	Internal speaker or headphone	Internal speaker or headphone
Display type	Color graphical	Color graphical	Color graphical			Color graphical	Color graphical with touch control	Color graphical with touch control	Color graphical with touch control
Display size / resolution	4.3", 480 x 272	4.3", 480 x 272	4.3", 480 x 272			4.3", 480 x 272	7", 800 x 480	7", 800 x 480	7", 800 x 480
Internal memory	100 patients	100 patients	100 patients (only PTA)			100 patients (only PTA)	1 patient	1 patient	1 patient
Internal thermal printer	No	No	Optional			Optional	Optional	Optional	Optional
PC interface	USB (driverless)	USB (driverless)	USB (driverless)			USB (driverless)	USB (driverless)	USB (driverless)	USB (driverless)
Hybrid Technology	Yes	Yes	Yes			Yes	Yes	Yes	Yes
Software interface	Maestro (included)	Maestro (included)	Maestro (included)			Maestro (included)	Maestro (included)	Maestro (included)	Maestro (included)
Noah compatibility	Yes	Yes	Yes			Yes	Yes	Yes	Yes
Dimensions	32 x 32 x 9 cm 12.6 x 12.6 x 3.5 in	32 x 32 x 9 cm 12.6 x 12.6 x 3.5 in	32 x 32 x 9 cm 12.6 x 12.6 x 3.5 in			32 x 32 x 9 cm 12.6 x 12.6 x 3.5 in	32 x 32 x 15 cm 12.6 x 12.6 x 5.9 in	32 x 32 x 15 cm 12.6 x 12.6 x 5.9 in	32 x 32 x 15 cm 12.6 x 12.6 x 5.9 in
Weight	1.8 Kg / 4.0 lbs	1.8 Kg / 4.0 lbs	1.8 Kg / 4.0 lbs			1.8 Kg / 4.0 lbs	2 Kg / 4.4 lbs	2 Kg / 4.4 lbs	2 Kg / 4.4 lbs

**Flute Basic****Flute HF****Flute Plus****Clarinet Basic****Clarinet Plus****Viola Basic****Viola Plus**

Type of device	Stand-alone middle ear analyzer	Stand-alone middle ear analyzer	Stand-alone middle ear analyzer		Stand-alone middle ear analyzer	Stand-alone middle ear analyzer	Stand-alone audiometer middle ear analyzer	Stand-alone audiometer middle ear analyzer
Class EN 60645-5, ANSI S3.39	2	2	2		1	1	2	2
Class EN 60645-1, ANSI S3.6	-	-	-		-	-	3	3
Available tests								
Automatic tympanometry	Yes	Yes	Yes		Yes	Yes	Yes	Yes
Manual tympanometry	No	No	Yes		Yes	Yes	No	No
Automatic acoustic reflex thresholds	Yes	Yes	Yes		Yes	Yes	Yes	Yes
Manual acoustic reflex test	No	No	Yes		Yes	Yes	No	No
Acoustic reflex decay	No	No	Yes		Yes	Yes	No	Yes
Acoustic reflex latency	No	No	No		Yes	Yes	No	No
Eustachian Tube Function test	No	Yes (Intact and perforated TM)	Yes (only intact)		Yes (Intact and perforated TM)	Yes (Intact and perforated TM)	No	No
Pure tone audiometry	No	No	No		No	No	Yes	Yes
Speech audiometry	No	No	No		No	No	No	Yes
QuickSIN™	No	No	No		No	No	No	Optional
Probe tone	226 Hz at 85 dB SPL	226 Hz at 85 dB SPL 1,000 Hz at 75 dB SPL	226 Hz at 85 dB SPL 1,000 Hz at 75 dB SPL (opt.)		226 Hz at 85 dB SPL	226 Hz at 85 dB SPL 678 Hz at 80 dB SPL 800, 1000 Hz at 75 dB SPL	226 Hz at 85 dB SPL	226 Hz at 85 dB SPL
Measured components	Admittance [Y]	Admittance [Y]	Admittance [Y]		Admittance [Y]	Admittance [Y] Susceptance [B], Conductance [G]	Admittance [Y]	Admittance [Y]
Compliance range	0.2 to 8.0 ml	0.2 to 8.0 ml (@226 Hz) 0.9 to 15 mmho (@1000 Hz)	0.2 to 8.0 ml (@226 Hz) 0.9 to 15 mmho (@1000 Hz)		0.2 to 8.0 ml	-2 to 8.0 ml (@ 226Hz) -2 to 16 mmho (678, 800, 1k Hz)	0.2 to 8.0 ml	0.2 to 8.0 ml
Pressure range	From -600 to +400 daPa	From -600 to +400 daPa	From -600 to +400 daPa		From -600 to +400 daPa	From -600 to +400 daPa	From -600 to +400 daPa	From -600 to +400 daPa
Pressure change rate	50, 100, 200, 300 daPa/sec, AUTO	50, 100, 200, 300 daPa/sec, AUTO	50, 100, 200, 300 daPa/sec, AUTO		15, 50, 100, 200, 300, 400, 600 daPa/sec, AUTO	15, 50, 100, 200, 300, 400, 600 daPa/sec, AUTO	50, 100, 200, 300 daPa/sec, AUTO	50, 100, 200, 300 daPa/sec, AUTO
Manual pump control	No	No	Yes (only in reflex tests)		Yes	Yes	No	No
Acoustic reflex stimuli (Ipsi/Contra)								
Pure tone frequencies	250(C),500,1k, 2k, 4k Hz	250(C),500,1k, 2k, 4k Hz	250(C),500,1k, 2k, 3k, 4k, 6k, 8k(C) Hz		250(C), 500, 1k, 2k, 3k, 4k, 6k, 8k(C) Hz, LPN, HPN, BBN, no stimuli	250(C), 500, 1k, 2k, 3k, 4k, 6k, 8k(C) Hz, LPN, HPN, BBN, no stimuli	250(C),500,1k, 2k, 4k Hz	250(C),500,1k, 2k, 4k Hz
Maximum intensity	110 dB HL (Ipsi)/120 dB HL (Contra)	110 dB HL (Ipsi)/120 dB HL (Contra)	110 dB HL (Ipsi)/120 dB HL (Contra)		110 dB HL (Ipsi)/120 dB HL (Contra)	110 dB HL (Ipsi)/120 dB HL (Contra)	110 dB HL (Ipsi)/120 dB HL (Contra)	110 dB HL (Ipsi)/120 dB HL (Contra)
Acoustic reflex stim. duration	Selectable (from 0.5 to 2.5 sec)	Selectable (from 0.5 to 2.5 sec)	Selectable (from 0.5 to 2.5 sec)		Selectable (from 0.5 to 2.5 sec)	Selectable (from 0.5 to 2.5 sec)	Selectable (from 0.5 to 2.5 sec)	Selectable (from 0.5 to 2.5 sec)
Audiometer specifications								
Outputs	-	-	-		-	-	AC, BC, Insert Mask	AC, BC, Insert Mask
Inputs	-	-	-		-	-	PTA: pure tone, warble Masking: NBN, WN	PTA: pure tone, warble Speech: EXT1, EXT2, INT, MIC Masking: NBN, WN, SN
Display type	Color graphical	Color graphical	Color graphical		Color graphical touch display	Color graphical touch display	Color graphical	Color graphical
Display size / resolution	4.3", 480 x 272	4.3", 480 x 272	4.3", 480 x 272		7", 800 x 480	7", 800 x 480	4.3", 480 x 272	4.3", 480 x 272
Internal thermal printer	Optional	Optional	Optional		Optional	Optional	Optional	Optional
PC interface	USB (driverless)	USB (driverless)	USB (driverless)		USB (driverless)	USB (driverless)	USB (driverless)	USB (driverless)
Software interface	Maestro (included)	Maestro (included)	Maestro (included)		Maestro (included)	Maestro (included)	Maestro (included)	Maestro (included)
Noah compatibility	Yes	Yes	Yes		Yes	Yes	Yes	Yes
Dimensions	32 x 32 x 9 cm 12.6 x 12.6 x 3.5 in	32 x 32 x 9 cm 12.6 x 12.6 x 3.5 in	32 x 32 x 9 cm 12.6 x 12.6 x 3.5 in		32 x 32 x 15 cm 12.6 x 12.6 x 5.9 in	32 x 32 x 15 cm 12.6 x 12.6 x 5.9 in	32 x 32 x 9 cm 12.6 x 12.6 x 3.5 in	32 x 32 x 9 cm 12.6 x 12.6 x 3.5 in
Weight	2.0 Kg / 4.4 lbs	2.0 Kg / 4.4 lbs	2.0 Kg / 4.4 lbs		2.2 Kg / 4.9 lbs	2.2 Kg / 4.9 lbs	2.0 Kg / 4.4 lbs	2.0 Kg / 4.4 lbs

	 Piccolo Basic	 Piccolo Plus	 Piccolo Speech	 Cello
Type of device	PC - iPad® controlled audiometer	PC - iPad® controlled audiometer	PC - iPad® controlled audiometer	PC - iPad® controlled audiometer
Class EN 60645-1, ANSI S3.6	4	3	3	2 (A or AE)
Output	AC	AC, BC	AC, BC, Speech	AC, BC, Speech, HF (opt.)
Masking	NBN	NBN	NBN, WN, SN	NBN, WN, SN
Insert masking earphone	No	No	No	Optional
Warble tone	Yes	Yes	Yes	Yes
Pulsed tone	0.5Hz, 1Hz, 2 Hz	0.5Hz, 1Hz, 2 Hz	0.5Hz, 1Hz, 2 Hz	0.5Hz, 1Hz, 2Hz
Frequency range	125 - 8,000 Hz	125 - 8,000 Hz	125 - 8,000 Hz	125 - 8000 Hz 8000 - 20000 Hz (opt.)
Maximum output intensities				
AC	-10 to 120 dB HL	-10 to 120 dB HL	-10 to 120 dB HL	-10 to 120 dB HL
BC	-	-10 to 80 dB HL	-10 to 80 dB HL	-10 to 80 dB HL
AC HF	-	-	-	-20 to 90 dB
Attenuator step	5 dB	5 dB	5 dB	1 -5 dB
FF output (external amp. req.)	No	No	No	Yes
Support of insert earphones (ER-3A and ER-5A)	Separated calib. table	Separated calib. table	Separated calib. table	Dedicated output / separated calib. table
Automatic audiometry	HW auto threshold	HW auto threshold	HW auto threshold	HW auto threshold
Speech audiometry	No	No	Yes	Yes
Speech inputs	-	-	EXT1, EXT2, USB, Mic	EXT1, EXT2, USB, Mic
Special tests	-	-	QuickSIN™ (optional)	SISI, Master Hearing Aid, TEN test (opt.), QuickSIN™ (opt.)
Pediatric tests	No	No	No	Video-VRA (optional)
Talk over	External microphone	External microphone	External microphone	External microphone
Talk back	No	No	No	Yes
Monitor	No	No	No	Yes
Connection to PC	USB (driverless)	USB (driverless)	USB (driverless)	USB (driverless)
Controlling software	Maestro (included)	Maestro (included)	Maestro (included)	Maestro (included)
Noah compatibility	Yes	Yes	Yes	Yes
Connection to iPad®	Bluetooth 4 - Requires Piccolo with Aero option	Bluetooth 4 - Requires Piccolo with Aero option	Bluetooth 4 - Requires Piccolo with Aero option	Bluetooth 4 - Requires Cello with Aero option
Controlling app	Maestro (available on the App Store)	Maestro (available on the App Store)	Maestro (available on the App Store)	Maestro (available on the App Store)
Dimensions	16 x 16 x 3 cm 6.3 x 6.3 x 1.2 in	16 x 16 x 3 cm 6.3 x 6.3 x 1.2 in	16 x 16 x 3 cm 6.3 x 6.3 x 1.2 in	31 x 22 x 6.4 cm 12.2 x 8.7 x 2.5 in
Weight	300 g / 10.6 oz.	300 g / 10.6 oz.	300 g / 10.6 oz.	700 g / 24.7 oz.

	 Trumpet	 Drum	
Type of device	REM system and PC controlled audiometer	Type of device	Hearing Instrument Test (HIT) box
Real Ear Measurement system		Hearing Aid Analyzer	
Real Measurement standard	IEC 61669, ANSI S3.46.	Applicable standards	EN 60118-0, EN 6011-7, ANSI S3.22
Stimuli (REM)	White noise, Pink noise, Speech noise, ICRA, Real Speech, any other sound file	Available tests	OSPL90, Full On Gain, I/O, Attack/Release, RTG, Frequency response, Equivalent Input Noise, THD, Battery Drain, Telecoil, RECD
Frequency range	125 Hz - 12.5 kHz	Frequency range	125 Hz - 12.5 kHz
Intensity range	40 - 90 dB SPL	Frequency resolution	1/3, 1/6, 1/12, 1/24 octave
Measure range	40 - 130 dB SPL	Stimulation intensity range	40 - 100 dB SPL
Frequency Resolution	1/3, 1/24 octave	Coupler measurement range	40 - 145 dB
Available tests	REUR / REUG, REAR / REAG, REIG, REOR / REOG, Advanced, Live speech, RECD (opt.)	Stimuli	Warble tone, Pure tone, White noise, Pink noise, Speech noise, ICRA, any other sound file
Audiometer		Coupler type	2cc, ITE, RIC and BTE adapters
Class EN 60645-1, ANSI S3.6	2 (A or AE)	Telecoil drive	10 - 100 mA/m
Output	AC, BC, Speech	Battery simulator	Standard 5A, 10A, 312, 13, 675
Stimuli	pure tone, warble tone	Connection to PC	USB (driverless)
Speech inputs	USB, Mic	Controlling software	Maestro (included)
Special tests	SISI, Master Hearing Aid, TEN test (opt.), QuickSIN™ (opt.)	Noah compatibility	Yes
Maximum output intensities		Dimensions (WxDxH)	32 x 33 x 22 cm / 12.6 x 13 x 8.7 in
AC	-10 to 120 dB HL	Weight	7.5 kg / 16.5 lbs
BC	-10 to 80 dB HL		
FF output (amplified)	Yes (external or built-in speaker)		
Connection to PC	USB (driverless)		
Controlling software	Maestro (included)		
Noah compatibility	Yes		
Dimensions (WxDxH)	15.5 x 10 x 24.5 cm / 6.1 x 3.9 x 9.7 in		
Weight	1.5 kg / 3.5 lbs		



Inventis srl is member of HIMSA



The Inventis Quality System complies with ISO 9001 and ISO 13485 standards

Inventis® is a registered trademark of Inventis s.r.l.

iPad is a trademark of Apple Inc. registered in the U.S. and other countries. App Store is a service mark of Apple Inc.

DOC: INVENTIS-CAT-2017-01-EN
Technical data subject to variations without prior notice



INVENTIS s.r.l.
CORSO STATI UNITI, 1/3
35127 PADOVA – ITALY
PHONE: +39.049.8962 844
FAX: +39.049.8966 343
info@inventis.it
www.inventis.it

Follow us on Twitter
<http://twitter.com/inventissrl>